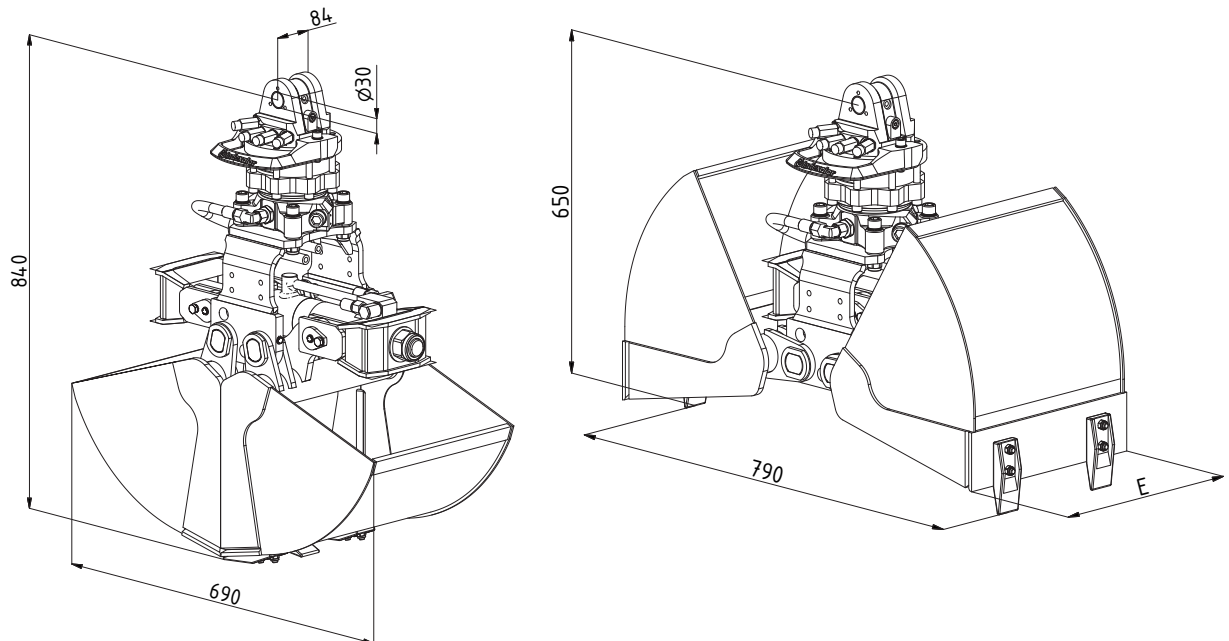


Series|DCS05

Excavator weight class: 1 - 2 t
Two-shell excavation grab



Type	Capacity SAE (l)	Weight (kg)	Cutting width E (mm)	Number of teeth
DCS05-300	35	125	300	3
DCS05-400	45	135	400	3

As of: 03/2015 • Rev.: J • Subject to technical modifications

Technical specifications|DCS05

Excavator weight class:	t	1 - 2
Max. load bearing capacity	t	Grab: 1/rotary motor 2.5
Bulk weight up to	t/m ³	2
Max. operating pressure	bar	250 (gripping and slewing function)
Max. closing force	kN	20



|Use: Miniexcavator and truck loading crane

Multipurpose excavation grab for typical hydraulic excavator tasks such as excavation and digging natural soil, digging ditches and cable trenches, loading dirt, gravel and sand.



|Design features

- The shells are exchangeable within the entire series
- Continuously rotatable hydraulic compact rotary motor
- Complete shell made of high-strength fine-grained steel (HB 450)
- Forged 2-hole screw-on teeth
- Horizontal, protected lifting cylinder
- Hose hoop guard for the hose connections

|Available accessories and equipment

- Hose set and mounting for all known excavator manufacturers
- Mounting with pendular brake
- Ejector, grab extension
- Load hooks
- Special shells according to customer specifications
- Additional special equipment upon request