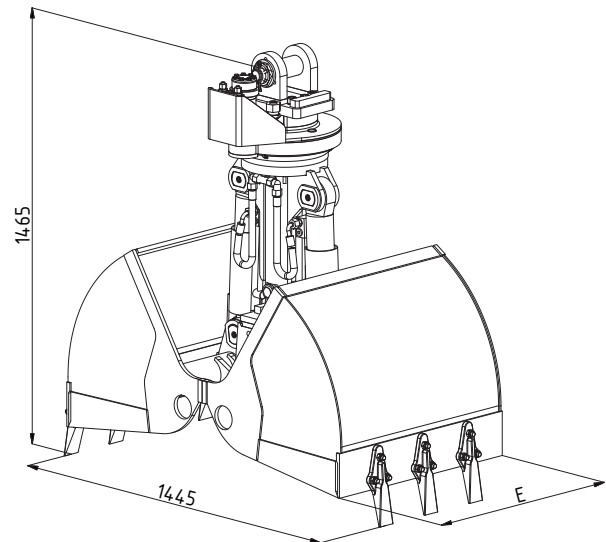
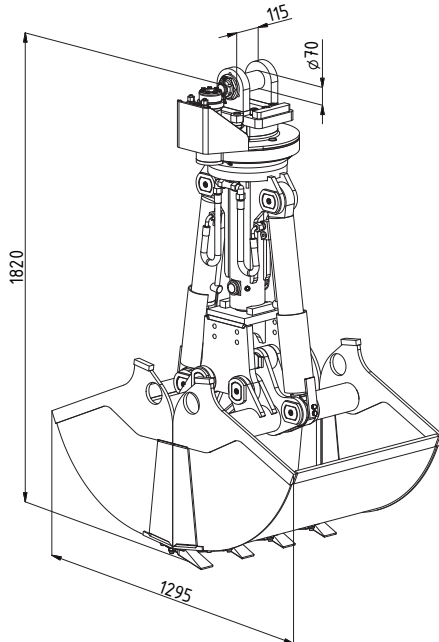
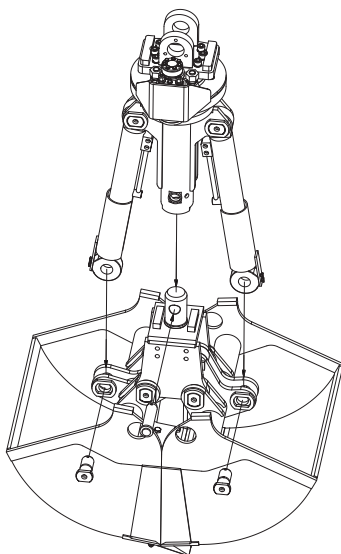


Series|DCS3

Excavator weight class: 9 - 15 t
Two-shell excavation grab



Type	Capacity SAE (l)	Weight (kg)	Cutting width E (mm)	Number of teeth
DCS3-300	140	570	300	3
DCS3-400	185	585	400	3
DCS3-500	230	610	500	5
DCS3-600	275	625	600	5
DCS3-700	320	640	700	7
DCS3-800	365	660	800	7



Technical specifications|DCS3

Excavator weight class:	t	9 - 15
Max. grab load bearing capacity	t	Grab: 2 / slewing gear: 10
Bulk weight up to	t/m ³	2
Max. operating pressure	bar	350 (grab function) / 140 (turning function)
Max. closing force	kN	40



|Use: Mobile and chain excavators

Multipurpose excavation grab for typical hydraulic excavator tasks such as excavation and digging natural soil, digging ditches and cable trenches, loading dirt, gravel and sand, lifting objects of all kinds.

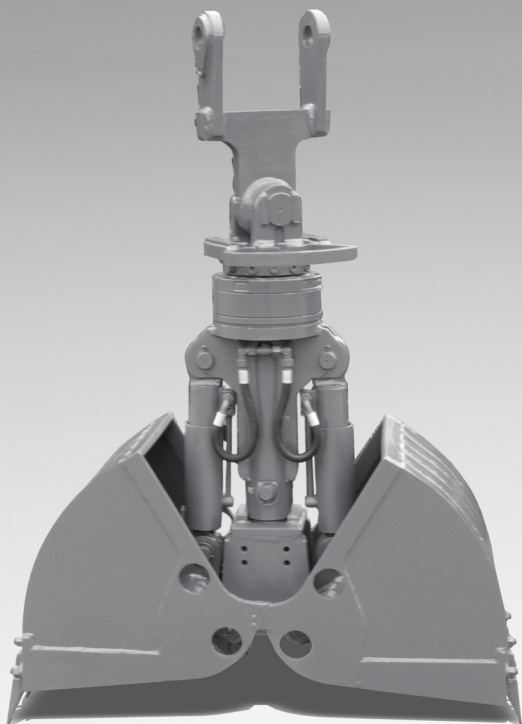


Fig.: DCS3 with compact rotary motor

|Design features

- The shells and shell carriers are exchangeable with a 3-point plug-in system within the entire series
- Continuously rotatable hydraulic rotary drive
- Side and base edges made of high-strength fine-grain steel (HB 450)
- Forged 3-hole screw-on teeth, piston rod protection, hose protective plate for the hydraulic connections on the slewing gear

|Available accessories and equipment

- Hose set and mounting for all known excavator manufacturers
- Mounting with pendular brake
- Load hooks, bucket teeth
- Compact motor, ejector
- Special shells (such as round hole shells, HD design)
- Special shells according to customer specifications
- Additional special equipment upon request